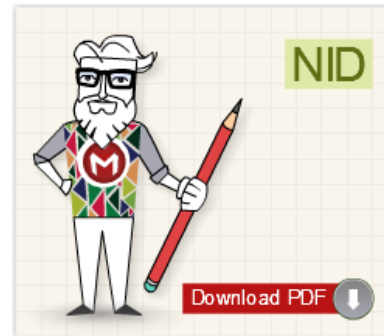


Nid M.Des CDAT
Papers

*Free Download Material by
Mosaic Institute of Design*

MOSAIC - INDIA'S NO. 1 IN NID PREPARATIONS



NID BOOKS

*printed study material,
doorstep delivery across
india*

NID E-BOOKS

*instant downloads,
saves delivery time,
light on your pocket*



NID VIDEOS

*24X7 access,
pause-rewind-relearn,
study anywhere-anytime*

NID ONLINE TEST

*test your preparations,
instant results,
detailed answer key*



MORE TO EXPLORE

NID EXAMS

*admissions, pattern, date,
schedule, details*

NID FORMS

*fees, admit card, important
dates, test centres*

NID SYLLABUS

*exam pattern,
course content*

NID ELIGIBILITY

*admission criteria,
qualification*

NID STUDY MATERIAL

*full, combo, mini, instant,
test series pack*

NID VIDEO COACHING

*narrations, illustrations
rich animations,*

ABOUT NID

*about exam, website,
contact info*

NID CRASH COURSES

*schedule, duration,
contents, details*



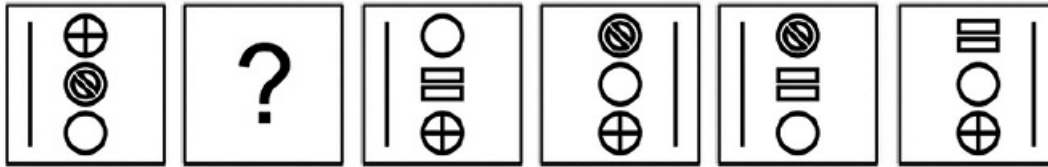
NID M.Des DAT Prelims
CDAT - Common Design Aptitude Test

PART 1

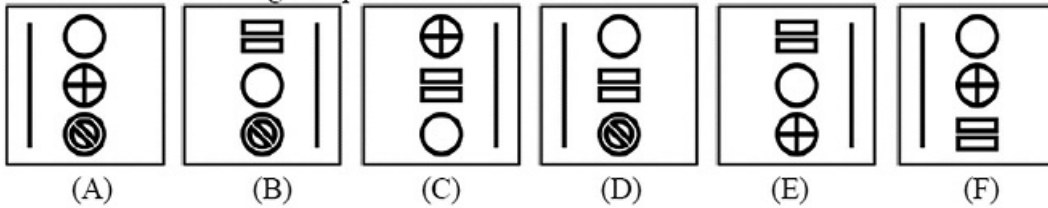
Do not write your name anywhere in the booklet. This will lead to disqualification. Please read the question carefully and follow the instructions provided.

Directions: Question No.1 carries 1.0 mark.

Q1. Study the following series of images.



Which of the following completes the series above?



Answer: _____

Directions: Question No. 2 to 9 carries 2 marks each.

Q2. Below are the national flags of Pakistan (Image 01) and Bhutan (Image 02) in gray scale.



Image 01: National flag of Pakistan

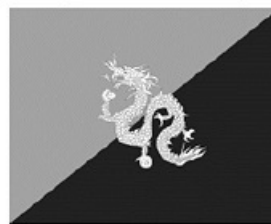


Image 02: National flag of Bhutan

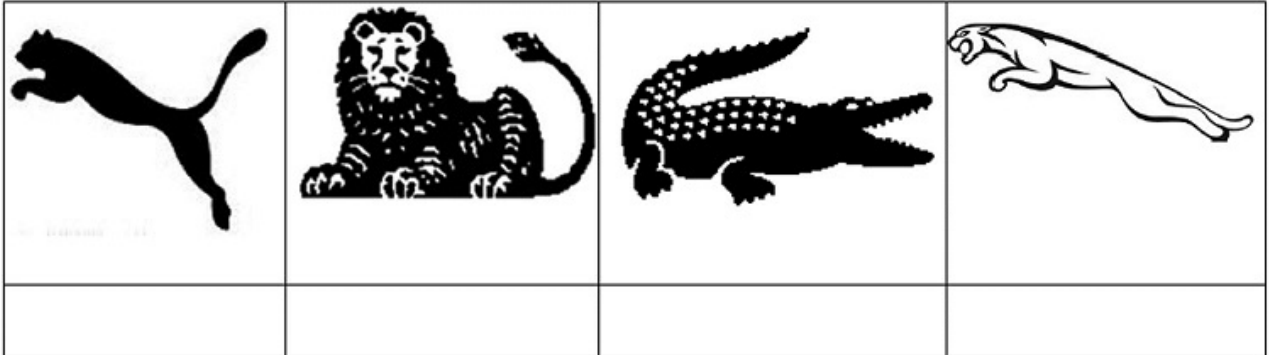
Based on the color actually used in the national flags of Pakistan and Bhutan, indicate from the list below that they belong to.

[Complementary, Analogous, Monochrome, Primary, Secondary, None]

Color scheme of the national flag of Pakistan: _____

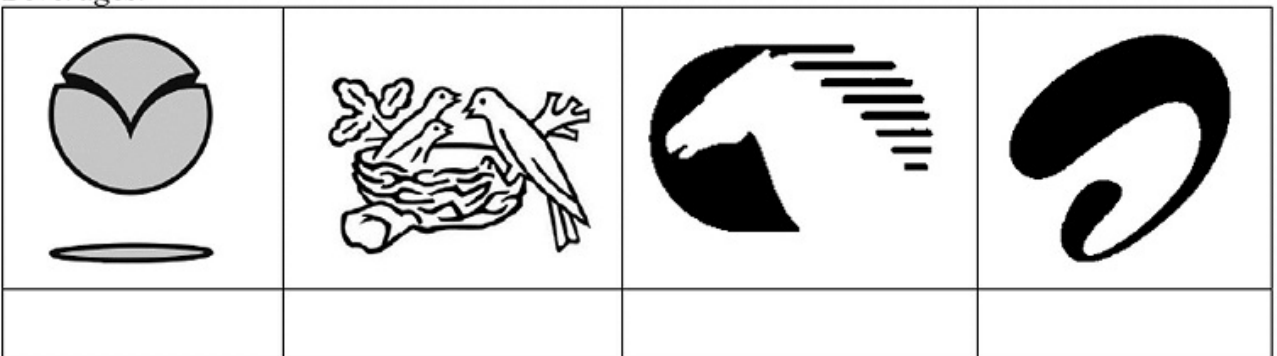
Color scheme of the national flag of Bhutan: _____

Q3. Following are the images of animals used by organizations in their identity / branding / logo. In the space below each image write the name of the brand / company associated with it.



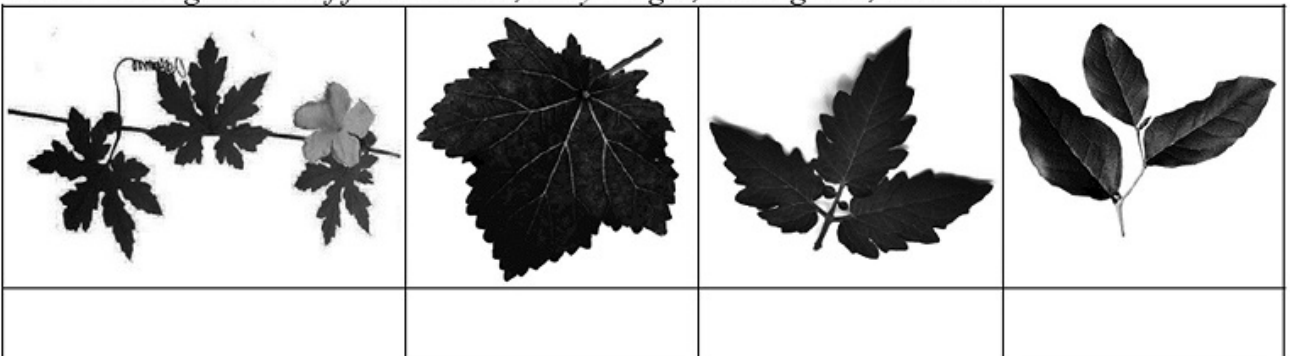
Q4. The following patterns/symbols/icons fully / partially represent the branding / identity of companies or organizations. In the space below each image write the area/domain in which the company/organization operates.

Choose the area/domain from: Telecommunication, Automobile, Pharmaceutical, Food & Beverages.

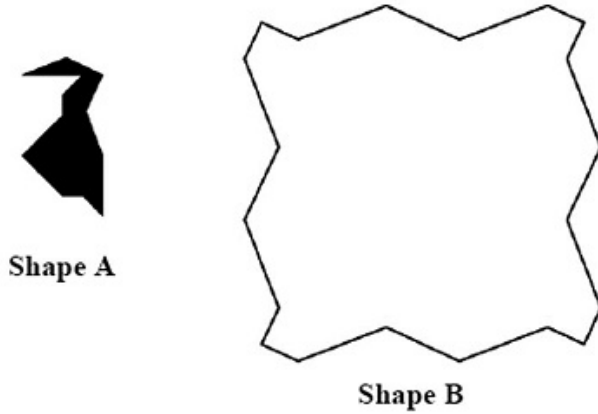


Q5. Following are the images of leaves of vegetables. In the space below each image write the name of the vegetable for the leaf.

Choose the vegetable leaf from: Lemon, Lady Finger, Bitter gourd, Tomato.



Q6. Refer the shape A and shape B below. How many times does shape A need to be repeated in order to fill shape B completely (without overlapping and leaving any gaps in between)?



Answer: _____

Q7. Write the name of the country for each of the object/clothing/architecture from where it belongs to in the space provided below the image of an object.

Choose the country from Ethiopia, Bhutan, Mexico and Russia.



Image 01 _____

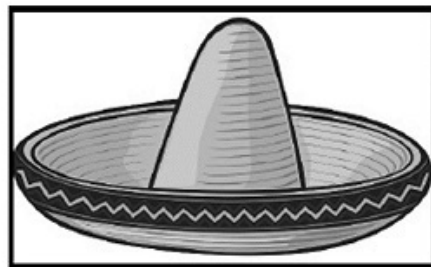


Image 02 _____



Image 03 _____



Image 04 _____

Q8. Following are images of “Indian Wall Art” being practiced in different regions across India. Below each image write the name of the State to which it belongs.



State: _____



State: _____



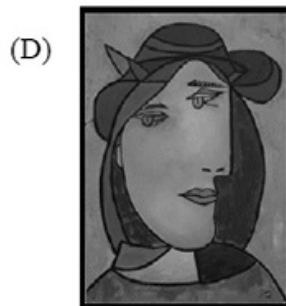
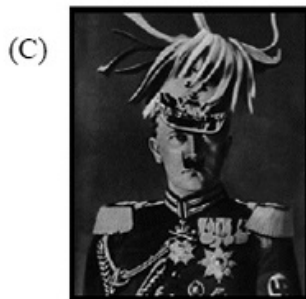
State: _____



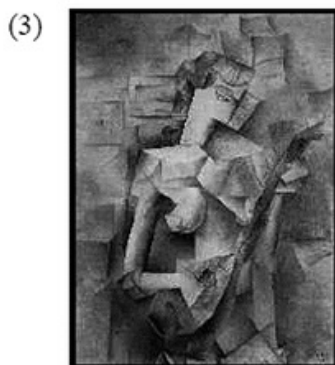
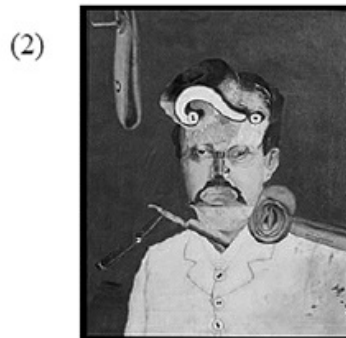
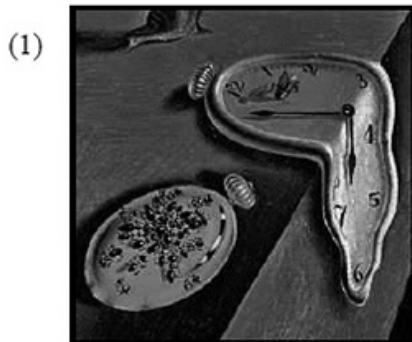
State: _____

Q9. Study the images of Set 01 and Set 02.

Images of Set 01



Images of Set 02



Associate visual expression of images of Set 01 to Set 02 and write the answer below:

(A) _____ (B) _____ (C) _____ (D) _____

Directions: Question No. 10 to 11 carries 2.50 marks each.

Q10. Identify five differences between image A and B. Circle the differences in image B.


A



B




Q11. Below are the symbols of sustainable development goals as published by United Nations Development Programme (UNDP). Write the goal in words against each symbol.

a)  _____

b)  _____

c)  _____

d)  _____

e)  _____

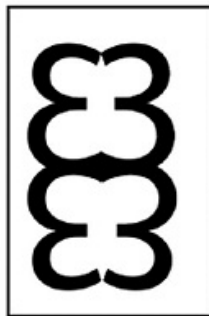
Directions: Question No. 12 carries 3.0 marks.

Q12. Study the images below. Identify the pattern and draw the image which comes next in box No 04.

Draw the image in black colour only. Thickness of the pattern must be same as images 01, 02 and 03.



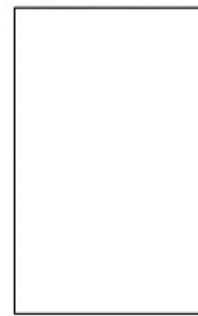
01



02



03



04

Mosaic

Institute Of Design



71, Sardar Centre,

Vastrapur, Ahmedabad

9033082625, 9824083847

www.mosaicdesigns.in